

model

60610

SINGLE - POINT MINIATURE LOAD CELL



FEATURES :

- ❖ Single Point Capability with Minimum Off-centre Error
- ❖ Low Profile Design
- ❖ Capacity as low as 200 gmf. Full Scale.
- ❖ Moisture Proof Sealing.
- ❖ Inbuilt Protecting Bracket

APPLICATIONS :

- ❖ Precision Jewellery Scales
- ❖ Small Bagging Machines
- ❖ Thread Tension Measurements

DESCRIPTION :

Model 60610 is a Strain Gage based low profile bending beam Miniature Load Cell and is ideal for Table Top & Jewellery Scales. It is designed for low eccentric load sensitivity. It is provided with mechanical over load & under load protection mechanism.

PERFORMANCE SPECIFICATION :

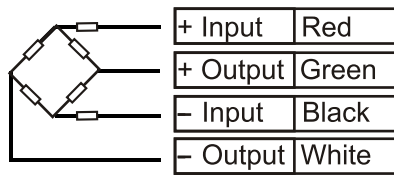
Standard Capacities (Gmf.)	: 200, 300, 400, 500, 700
(Kgf.)	: 1, 1.5, 2
Excitation Voltage	: 10 VDC - Maximum 15 VDC
Nominal Output	: 1.6 mV/V
Non-Linearity	: < ± 0.025 % FSO (Full Scale Output)
Hysteresis	: < ± 0.02 % FSO
Non-Repeatability	: < ± 0.01 % FSO
Creep (30 minutes)	: < ± 0.03 % FSO
Zero Balance	: ± 5.0 % FSO
Input Resistance	: 420 ± 15 Ohms
Output Resistance	: 350 ± 3 Ohms
Insulation Resistance	: > 1000 Mega Ohms at 50 VDC
Safe Overload	: 150 % of Rated Capacity
Ultimate Overload	: 200 % of Rated Capacity
Temperature	: 0-60° C
Compensated Range	
Temperature Effect on Output	: < 0.0015 % FSO/ °C
Temperature Effect on Zero	: < 0.0020 % FSO/ °C
Platter Size	: 120 mm dia
Eccentric Load Effect	: < 0.02 % of FSO at 1/3 rated load placed at the edge of the specified size platter
Deflection	: < 0.5 mm at FSO
Construction	: Aluminium Alloy
Mechanical Protection	: Provided with bracket to protect from over load, under load & side load effects.



ADI ARTECH
TRANSDUCERS PVT. LTD.

A Joint venture with
ARTECH INDUSTRIES INC., U.S.A.

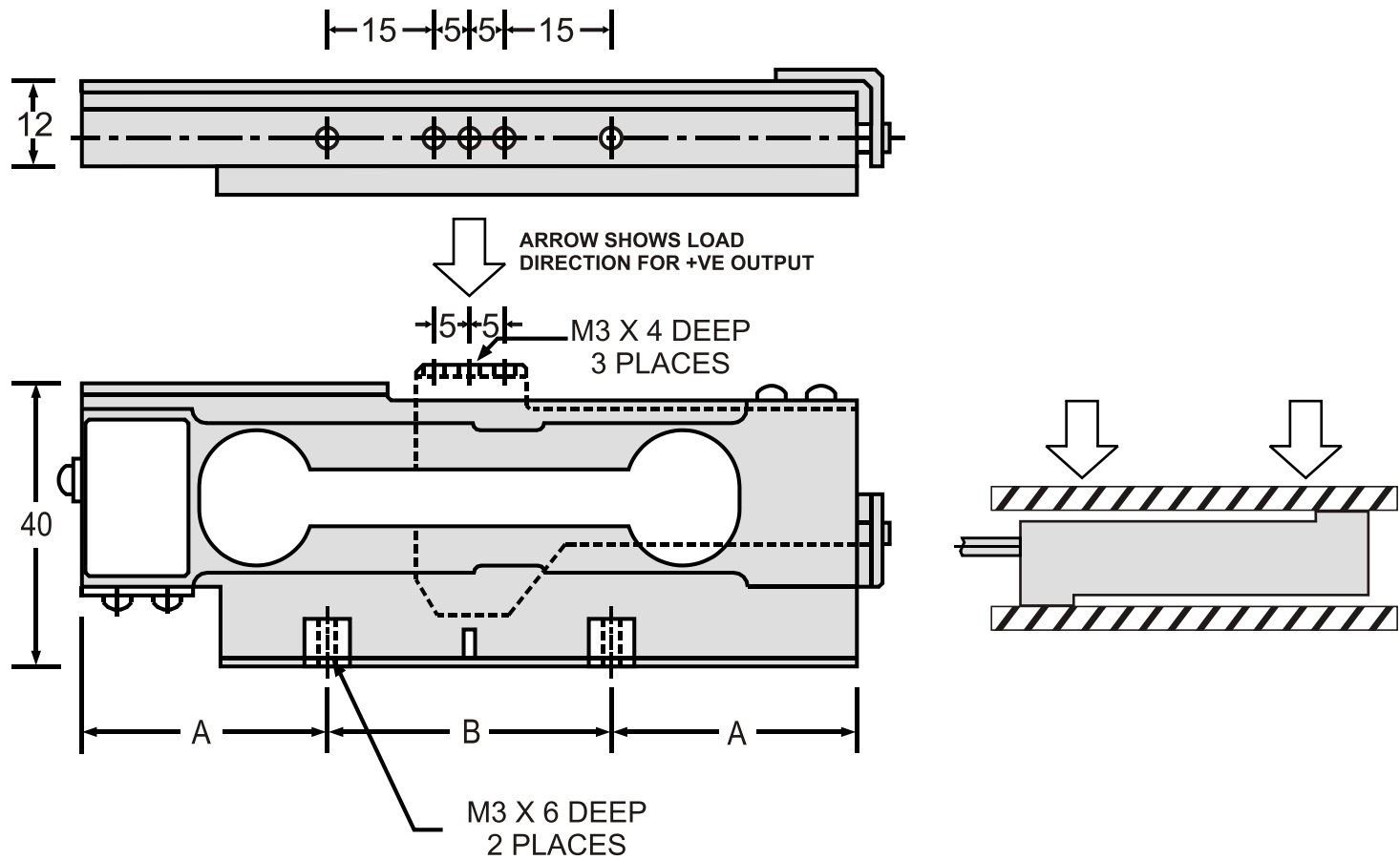
ELECTRICAL TERMINATION



CAPACITY	A	B
200 Gmf to 500 Gmf	34.5	40
700 Gmf to 2 Kgf	25	40

All dimensions are in mm.

4 CORE NON SCREENED CABLE - 300 mm.



ORDER INFORMATION :

ADI ARTECH is dedicated in maintaining adequate inventories of its Load Cells to provide the best service in the industry.

Order by the model number and indicate the capacity required.

Specifications are subject to change without notice

	Manufactured by :	917/1, G.I.D.C. ESTATE, MAKARPURA, VADODARA - 390 010 (INDIA)
	ADI ARTECH	Phone : 2655083/2651023
	TRANSDUCERS PVT. LTD.	FAX : (91) 0265-2638751
	A Joint venture with ARTECH INDUSTRIES INC., U.S.A.	E-mail : sales@adiartech.com artechad1@sancharnet.in
		Website : www.adiartech.com

QUALITY * PERFORMANCE * SERVICE
“A PREFERRED NAME IN LOAD CELL TECHNOLOGY”