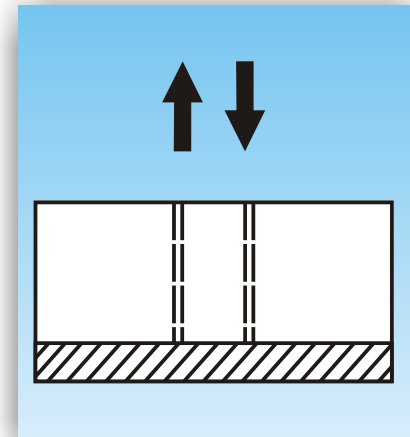
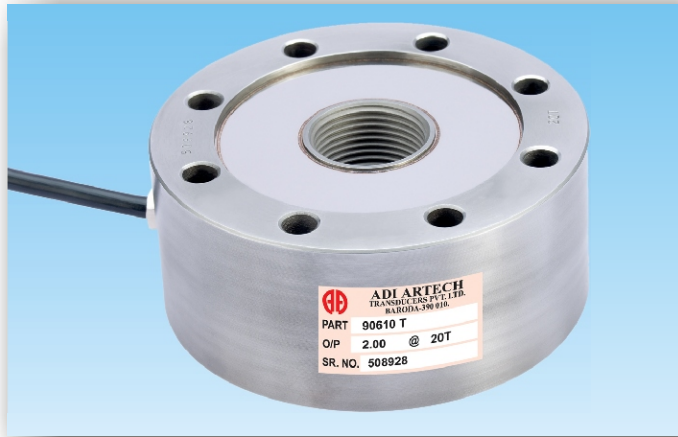


model

90610-T

PANCAKE UNIVERSAL LOAD CELL



FEATURES :

- ❖ 50Kgf to 50Tf Capacities.
- ❖ Complete environmental protection IP68 class.
- ❖ Standard output 2.0 mV/V available.
- ❖ Hardened stainless steel construction.
- ❖ Miniature and low profile.
- ❖ Easy for installation.
- ❖ Custom built design available on request.

APPLICATIONS :

- ❖ Tank level measurement
- ❖ Weighbridge
- ❖ Tank, silo and hopper weighing
- ❖ Tensile testing and automation
- ❖ Force and impact test
- ❖ Low profile floor scale

DESCRIPTION :

- ❖ 90610 -T pancake universal load cells are suitable for weigh bridge, tank and hopper weighing applications.
- ❖ This is constructed from heat treated stainless steel suitable for harsh and hygienic industrial applications.
- ❖ It is hermetically sealed and it has long life.
- ❖ Extremely suitable for tank, silos level monitoring.
- ❖ 90610 -T is available with integral thread.

PERFORMANCE SPECIFICATION :

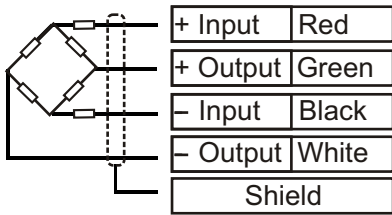
Standard Capacities (Kgf.)	: 50,100,200,500
(Tf.)	: 1,2,3,5,10,20,30,50
Excitation Voltage	: 10 VDC - Maximum 15 VDC
Nominal Output	: 2.0 mV/V
Non - Linearity	: < ± 0.05 % FSO (Full Scale Output)
Hysteresis	: < ± 0.05 % FSO
Non-Repeatability	: < ± 0.05 % FSO
Creep (30 minutes)	: < ± 0.03 % FSO
Input Resistance	: 770 ± 20 Ohms 2T & Above 390 ± 10 Ohms Upto 1T
Output Resistance	: 770 ± 7 Ohms 2T & Above 350 ± 3 Ohms Upto 1T
Insulation Resistance (50V)	: > 1000 Mega Ohms
Cable Length (4 core)	: Upto 2T-3M, Above 2T-5M
Safe Overload	: 150 %
Ultimate Overload of Rated	: 300 %
Temp. Compensated Range	: 0-60 °C
Temp. Effect on Output	: < 0.005 % FSO/ °C
Temp. Effect on Zero	: < 0.005 % FSO/ °C
Deflection	: < 0.5 mm at FSO
Material of Construction	: Stainless Steel-17-4 PH
Environmental Protection Class	: IP68



ADI ARTECH
TRANSDUCERS PVT. LTD.

A Joint venture with
ARTECH INDUSTRIES INC., U.S.A.

ELECTRICAL TERMINATION

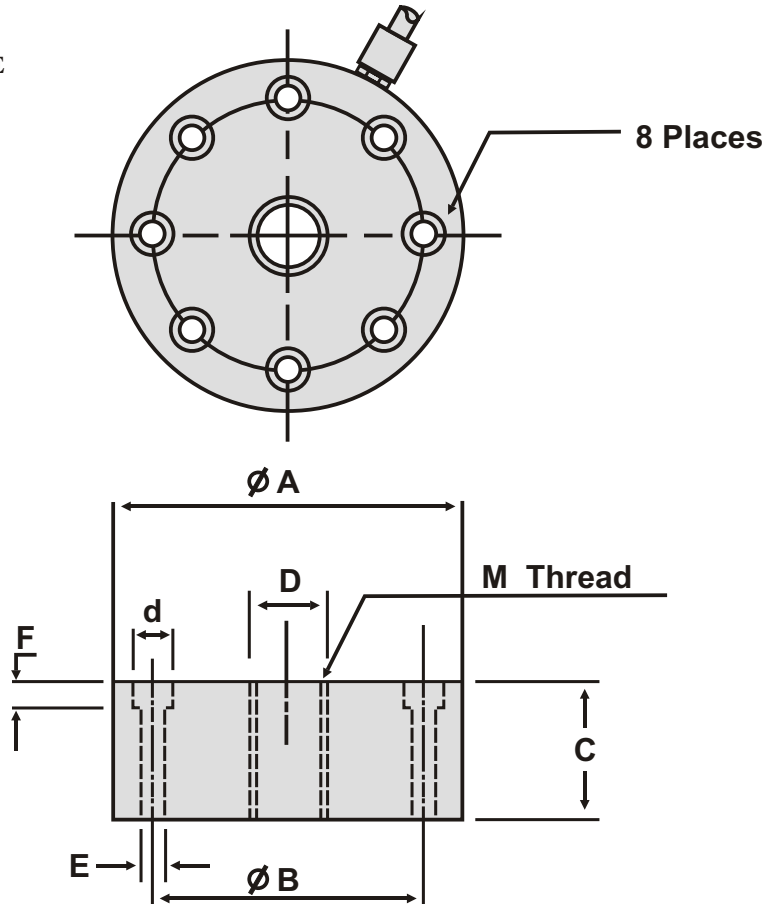


4 CORE SCREENED CABLE

COMPRESSION POSITIVE

Capacity	A	B	C	d	D	E	F	M Thread
50kgf. - 1Tf.	50	42	23	8	15	4.2	4.5	12x1.25
2Tf. - 5Tf.	90	70	35	10	19	6.2	6.5	16x1.5
10Tf. - 20Tf.	115	90	47	13	33	8.5	8.5	30x2
30Tf. - 50Tf.	155	125	75	18	47	12.5	12.5	39x2

All dimensions are in mm.



ORDER INFORMATION :

ADI ARTECH is dedicated in maintaining adequate inventories of its Load Cells to provide the best service in the industry.

Order by the model number and indicate the capacity required.

Specifications are subject to change without notice

	Manufactured by : ADI ARTECH TRANSDUCERS PVT. LTD. A Joint venture with ARTECH INDUSTRIES INC., U.S.A.	917/1, G.I.D.C. ESTATE, MAKARPURA, VADODARA - 390 010 (INDIA) Phone : 2655083/2651023 FAX : (91) 0265-2638751 E-mail : sales@adiartech.com artechad1@sancharnet.in Website : www.adiartech.com
	<p style="text-align: center;">QUALITY * PERFORMANCE * SERVICE</p> <p style="text-align: center;">“A PREFERRED NAME IN LOAD CELL TECHNOLOGY”</p>	