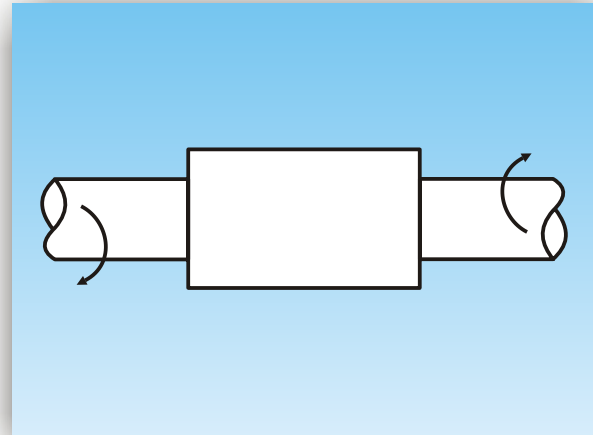
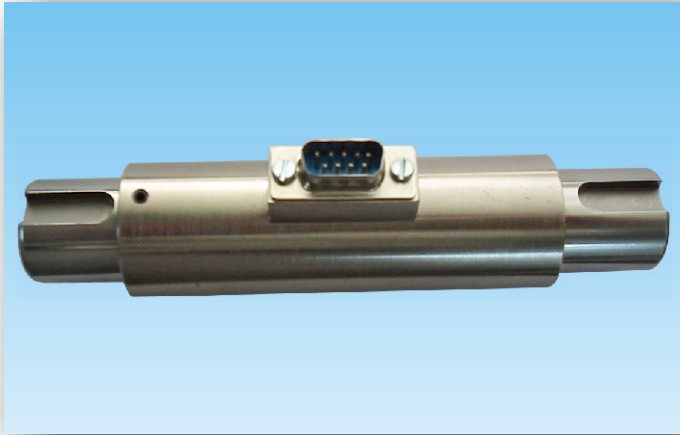


model

TTS

REACTION SHAFT TORQUE TRANSDUCER



FEATURES :

- ❖ Excellent selection of range from 10 to 20,000 NM.
- ❖ Complete environmental protection IP-65 class.
- ❖ Standard output 2.0m V/V.
- ❖ High accuracy.
- ❖ Axial and bending forces are compensated.

APPLICATIONS :

- ❖ Motors, switches, shaft and axles torque measurement.
- ❖ To measure operating torque for industrial valves and actuators.
- ❖ Automotive, aerospace, offshore valves test rigs.
- ❖ Torque measurement of industrial fasteners.

DESCRIPTION :

- ❖ This is used in industrial and research applications where torque is to be measured accurately.
- ❖ It is easily fitted to the test batch with the help of suitable A-key way.
- ❖ Flange mounted version available.
- ❖ Dimensional variations can be designed on request to suit customer's specific requirement and application.
- ❖ Suitable for clock wise and anti-clock wise directions.

PERFORMANCE SPECIFICATION :

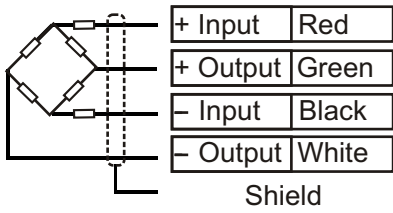
Standard Capacities (NM)	: 10,20,50,100,200,500,1000 2000,5000,10000,20000
Excitation Voltage	: 10 VDC (Max. 15 VDC)
Nominal Output	: 2 mV/V
Non - Linearity	: < ± 0.1 % FSO (Full Scale Output)
Hysteresis	: < ± 0.1 % FSO
Non-Repeatability	: < ± 0.1 % FSO
Creep (30 minutes)	: < ± 0.3 % FSO
Cable Length	: 5 mtr.
Input Resistance	: 390 Ohms
Output Resistance	: 350 Ohms
Insulation Resistance (50V)	: > 1000 Mega Ohms
Safe overload	: 150% of RC
Ultimate Overload	: 300 % of RC
Temp. Compensated Range	: 0-60 °C
Temp. Effect on Output	: < 0.05 % FSO/ °C
Temp. Effect on Zero	: < 0.05 % FSO/ °C
Material of Construction	: Stainless Steel-17-4 PH
Environmental Protection Class	: IP-65



ADI ARTECH
TRANSDUCERS PVT. LTD.

A Joint venture with
ARTECH INDUSTRIES INC., U.S.A.

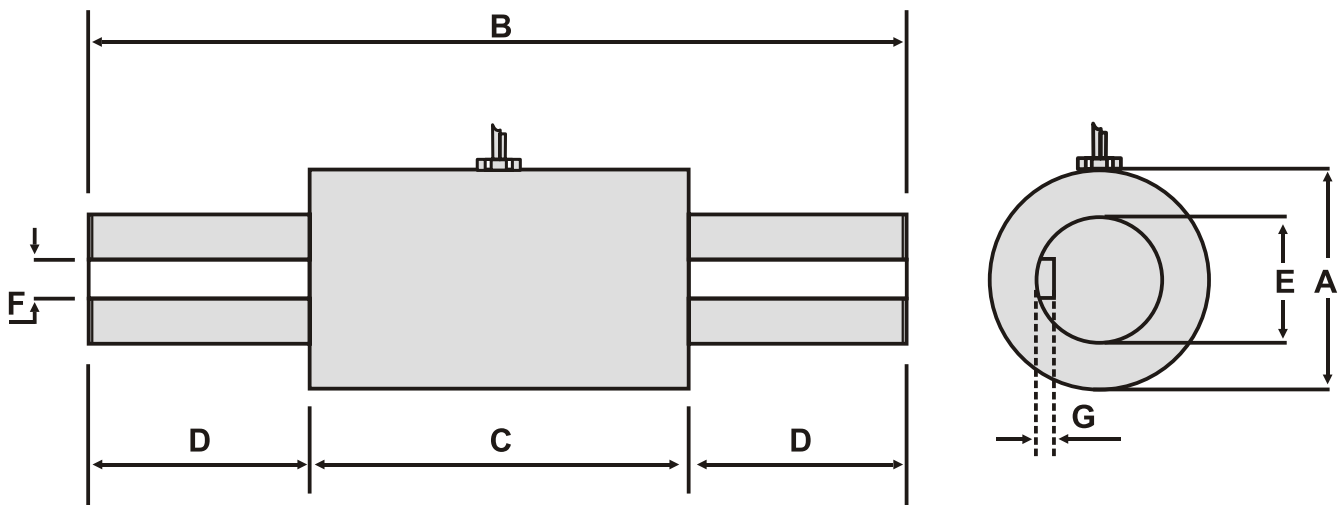
ELECTRICAL TERMINATION



4 CORE SCREENED CABLE

Capacity NM	A dia.	B	C	D	E dia.	F	G
10,20,50	50	150	100	25	20	6	3
100,200	50	150	100	25	25	8	3.5
500,1000	70	260	120	70	40	12	4
2000,5000	90	380	180	100	60	18	5.5
10000	100	480	190	145	75	20	6
20000	140	530	210	160	110	28	8

All dimensions are in mm.



ORDER INFORMATION :

ADI ARTECH is dedicated in maintaining adequate inventories of its Load Cells to provide the best service in the industry.

Order by the model number and indicate the capacity required.

Specifications are subject to change without notice

	Manufactured by :	917/1, G.I.D.C. ESTATE, MAKARPURA, VADODARA - 390 010 (INDIA)
	ADI ARTECH	Phone : 2655083/2651023
	TRANSDUCERS PVT. LTD.	FAX : (91) 0265-2638751
	<i>A Joint venture with ARTECH INDUSTRIES INC., U.S.A.</i>	E-mail : sales@adiartech.com artechad1@sancharnet.in
		Website : www.adiartech.com

QUALITY * PERFORMANCE * SERVICE
“A PREFERRED NAME IN LOAD CELL TECHNOLOGY”