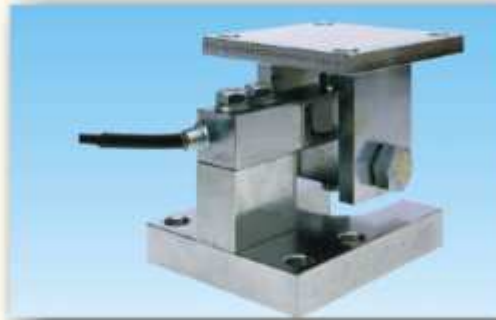

model
WM-I



FEATURES :

- ❖ 500 kgf to 10Tl Capacities
- ❖ Eliminates Check Rods in Most Applications.
- ❖ Mild Steel Construction
- ❖ Bolts Directly to Tank or Hopper leg or Floor.
- ❖ For Use with Single Ended Shear Beam Load Cell-Model 30310.

APPLICATIONS :

- ❖ Tank Weighing
- ❖ Hopper Weighing
- ❖ Cart Weighing
- ❖ Platform Weighing

DESCRIPTION :

The WM-I-Weighing Module is designed to utilize single ended shear beams-Model-30310 for platform, tank and hopper weighing. The module is available in mild steel. Loading of the cell is through a rod and spherical washer assembly that protects the cell from side load induced errors caused by tank or hopper expansion. It is self-checking and low profile module suitable for medium capacity applications. Check rods are unnecessary for static loads. If major load movement is anticipated, vessel or platform bumpers are required. The cell can be removed without raising the platform, minimising the disturbance of various piping and interconnections.

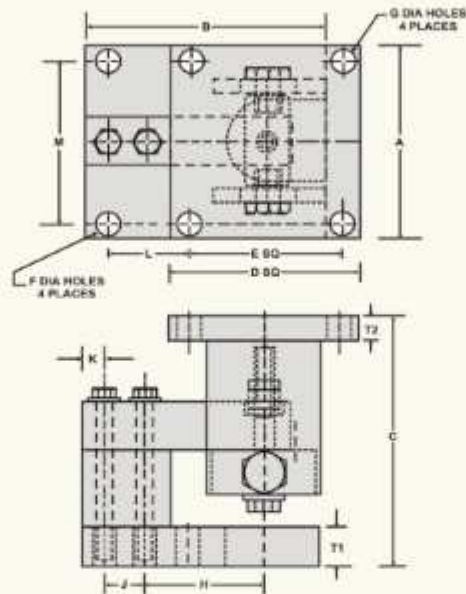


ADI ARTECH
TRANSDUCERS PVT. LTD.

A Joint venture with
ARTECH INDUSTRIES INC., U.S.A.

CAPACITY	A	B	C	DSQ	ESQ	F	G	H	J	K	L	M	T ₁	T ₂
500kgf to 2.5 Tf	125	150	145	125	100	15	15	75	25	15	50	100	25	12
3Tf to 5 Tf	125	200	170	125	100	15	15	95	38	19	75	100	25	12
7.5Tf to 10Tf	150	240	250	150	115	18	18	120	50	25	100	115	32	20

All dimensions are in mm.



ORDER INFORMATION :

ADI ARTECH is dedicated in maintaining adequate inventories of its Load Cells to provide the best service in the industry.

Order by the model number and indicate the capacity required.

Specifications are subject to change without notice

	Manufactured by : ADI ARTECH TRANSDUCERS PVT. LTD. <small>A Joint venture with ARTECH INDUSTRIES INC, U.S.A.</small>	9171, G.L.D.C. ESTATE, MAKARPURA, BARODA - 390 010 (INDIA) Phone : 2635983/2631023 FAX : (91) 0265-263751 E-mail : sales@aditech.com artech@1@sancharnet.in Website : www.aditech.com
---	---	---

QUALITY * PERFORMANCE * SERVICE
"A PREFERRED NAME IN LOAD CELL TECHNOLOGY"