

Description

90610-M-TH Mini Pan cake compression type load cell used where space is constraint. It is constructed from Aluminum Alloy suitable for harsh industrial applications. It is provided 3 mounting threaded hole for proper fixing of cell. Loading is through the threaded loading button.

Features

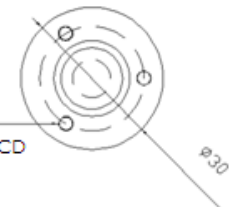
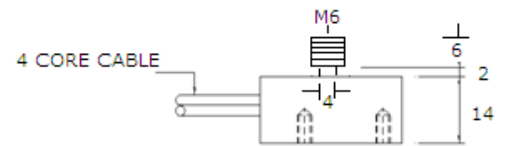
- ❖ Available in capacity up to 100 kgf
- ❖ Complete environment protection IP 65 class.
- ❖ Standard output 2.0mV/V
- ❖ Aluminum construction.

Applications

Compression Testing	Force & Impact Testing
Robotics	Pharma Machinery
Test Bench	Automation

Performance Specification

Standard Capacities	20, 50,100 kgf
Excitation Voltage	10 VDC- Maximum 15 VDC
Nominal Output	2.0 m V/ V +/-0.5
Non - Linearity	< ±0.25% FSO
Hysteresis	< ±0.1% FSO
Non-Repeatability	< ±0.1% FSO
Creep (30 minutes)	< ±0.03% FSO
Zero Balance	±1.0% FSO
Input Resistance	390 ± 10 Ohms
Output Resistance	350 ± 3 Ohms
Insulation Resistance (50 VDC)	> 1000 Mega Ohms
Cable Length (4 Core Screened)	1 Meters
Safe Overload of Rated Capacity	150%
Ultimate Overload of Rated Capacity	250%
Temp. Compensated Range	10-50 °C
Temperature Effect on Output	< 0.005% FSO/ °C
Temperature Effect on Zero	< 0.005% FSO/ °C
Deflection	< 0.4 mm at FSO
Finish & Construction	Aluminum Alloy
Environmental Protection Class	IP 65

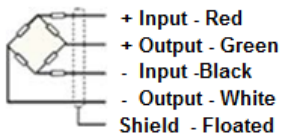


M3 X 6MM DEEP, AT 22 MM PCD EQUALLY SPACED, 3 PLCS

ALL DIMENSIONS ARE IN MM

Electrical Termination

Options



Compatible Instruments with Relay output, 4-20 mA or 0-2 Volt Output
 Digital Version with RS-485 interface / USB output / Blue Tooth Telemetry / Wireless Telemetry
 Software for Graphic, Tabulation, Reporting and Analysis

Specifications are subject to change.

All dimensions are in mm.

	<p>Made in INDIA by:</p> <p>ADI ARTECH</p> <p>TRANSDUCERS PVT. LTD.</p>	<p>917/1, G.I.D.C. Estate, Makarpura, Vadodara - 390 010, Gujarat, INDIA</p> <p>Mobile : +91-9374068998, 9879444551, 9054467370</p> <p>Email : sales@adiartech.com, adiartech@adiartech.com</p> <p>Website : www.adiartech.com</p>
---	---	---