

### Description

This is static reaction torque transducer – **CE Certified**, flange mount with female SQ Drive at loading end. It is designed for industrial and research applications. It is constructed from Aluminum Alloy for light weight and handy operations. TTS-F-SQ-F is strain gage based sensor with full temperature compensation over 10 to 50°C. It is compensated for axial and side loads for very good linearity and low hysteresis. It is very compact and easy to install into the applications. It is available from 0 - 1 NM to 0 - 30NM capacities to cover wide industrial applications. It is suitable for clock wise and anti-clock wise directions. This sensor can be supplied with factory calibrated instrument with display, computer interface etc.

### Features

- ❖ **CE Rated** ❖ Very compact and rugged for heavy duty applications.
- ❖ Compensated for axial and bending moments for good accuracy.
- ❖ Gage area is sealed for IP 65 degree of environmental class.
- ❖ Can be supplied as per customers required size and capacity.
- ❖ Both end shaft or one end shaft and other end flange type also can be supplied

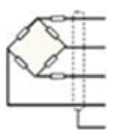
### Applications

- ❖ Actuator/valve/electrical tool testing
- ❖ Axle/shaft torsion test
- ❖ Bearing friction measuring
- ❖ Testing of starters/slip rings/brushes/clutches/brakes
- ❖ Electric/hydraulic/pneumatic motors testing
- ❖ Alternators/pumps/gas, diesel, turbine engines testing
- ❖ Automobile testing of drive shaft and crank shaft torque
- ❖ Defense, Aerospace, R&D Establishments, Offshore test rigs, Automotive, Machine tools, Electrical and Engineering Industries.

### Performance Specification

Standard Capacities	See table below
Excitation Voltage	10 VDC- Maximum 15 VDC
Nominal Output	2.0 m V/ V
Non - Linearity	< ±0.5% FSO
Hysteresis	< ±0.2% FSO
Non-Repeatability	< ±0.1% FSO
Creep (30 minutes)	< ±0.3% FSO
Zero Balance	±1.0% FSO
Input Resistance	392 ± 15 Ohms
Output Resistance	350 ± 3 Ohms
Insulation Resistance (50 VDC)	> 1000 Mega Ohms
Cable Length (4 Core Screened)	3 Mtrs
Safe Overload of Rated Capacity	150%
mate Overload of Rated Capacity	250%
Allowable Side Load	50%
Temp. Compensated Range	10-50 °C
Temperature Effect on Output	< 0.0015% FSO/ °C
Temperature Effect on Zero	< 0.0020% FSO/ °C
Deflection	< 0.4 mm at FSO
Finish & Construction	Aluminum Alloy
Environmental Protection Class	IP 65

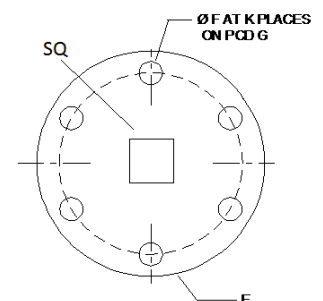
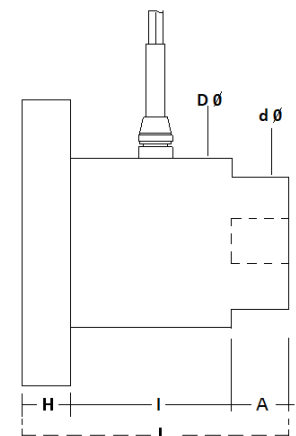
### Electrical Termination



- + Input - Red
- + Output - Green
- Input - Black
- Output - White
- Shield - Floated

### Options -

- 4-20 mA / 0-2 Volt Output
- Digital Version with RS-485 interface / USB output
- Blue Tooth Or Wireless Telemetry
- Compatible Instrument
- Software for Graphic, Tabulation, Reporting And Analysis



Capacity- NM	A	d dia	D dia	E-Dia.	F X K PLCS.	G - PCD	H	I	L	SQ
1, 2, 5, 10,20,30,	8	25	39	70	5.5 X 4	50	10	47	65	12.7(1/2")

Specifications are subject to change.

All dimensions are in mm.



Manufactured by:

**ADI ARTECH**  
**TRANSDUCERS PVT. LTD.**  
 (An ISO 9001:2015 Certified Company)

917/1, G.I.D.C. Estate, Makarpura, Vadodara - 390 010, Gujarat, INDIA

**Mobile** : +91-9374068998, 9879444551

**Email** : sales@adiartech.com, adiartech@adiartech.com

**Website** : www.adiartech.com