

Description

This is static reaction torque transducer, flange mount with female SQ Drive at loading end. It is designed for industrial and research applications. It is constructed from Electroless Ni plated tool steel for harsh industrial applications. TTS-F-SQ-F is strain gage based sensor with full temperature compensation over 10 to 50°C. It is compensated for axial and side loads for very good linearity and low hysteresis. It is very compact and easy to install into the applications. It is available from 0 - 100 NM to 0 – 10KNM capacities to cover wide industrial applications. It is suitable for clock wise and anti-clock wise directions. This sensor can be supplied with factory calibrated instrument with display, computer interface etc.

Features

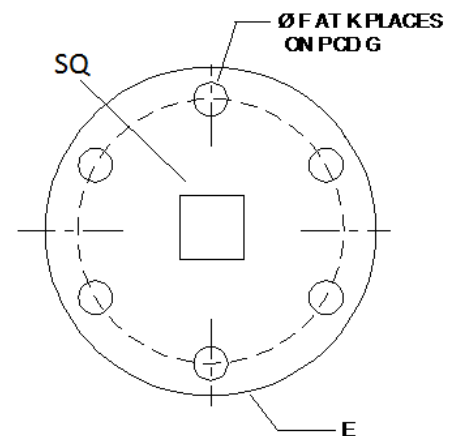
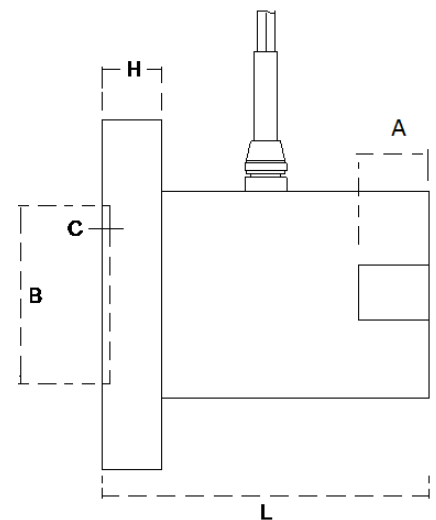
- ❖ Very compact and rugged for heavy duty applications.
- ❖ Compensated for axial and bending moments for good accuracy.
- ❖ Gage area is sealed for IP 65 degree of environmental class.
- ❖ Can be supplied as per customers required size and capacity.
- ❖ Both end shaft or one end shaft and other end flange type also can be supplied

Applications

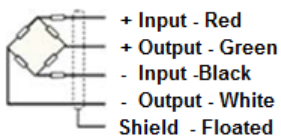
- ❖ Actuator/valve/electrical tool testing
- ❖ Axle/shaft torsion test
- ❖ Bearing friction measuring
- ❖ Testing of starters/slip rings/brushes/clutches/brakes
- ❖ Electric/hydraulic/pneumatic motors testing
- ❖ Alternators/pumps/gas, diesel, turbine engines testing
- ❖ Automobile testing of drive shaft and crank shaft torque
- ❖ Defence, Aerospace, R&D Establishments, Offshore test rigs, Automotive, machine tools, electrical and engineering industries.

Performance Specification

Standard Capacities	100, 200, 300, 500,1K, 2K, 3K, 5K, 10K
Excitation Voltage	10 VDC- Maximum 15 VDC
Nominal Output	2.0 m V/ V
Non - Linearity	< ±0.5% FSO
Hysteresis	< ±0.2% FSO
Non-Repeatability	< ±0.1% FSO
Creep (30 minutes)	< ±0.3% FSO
Zero Balance	±1.0% FSO
Input Resistance	392 ± 15 Ohms
Output Resistance	350 ± 3 Ohms
Insulation Resistance (50 VDC)	> 1000 Mega Ohms
Cable Length (4 Core Screened)	5 Mtrs
Safe Overload of Rated Capacity	150%
Ultimate Overload of Rated Capacity	250%
Allowable Side Load	50%
Temp. Compensated Range	10-50 °C
Temperature Effect on Output	< 0.0015% FSO/ °C
Temperature Effect on Zero	< 0.0020% FSO/ °C
Deflection	< 0.4 mm at FSO
Finish & Construction	Tool Steel / Stainless Steel 17-4 PH
Environmental Protection Class	IP 65



Electrical Termination



Options

- 4-20 mA / 0-2 Volt Output
- Digital Version with RS-485 interface / USB output
- Blue Tooth Or Wireless Telemetry Compatible Instrument
- Software for Graphic, Tabulation, Reporting And Analysis

Capacity-NM	A	B	C	E-dia	F X K PLCS.	G - PCD	H	L	SQ
100, 200	15	70	2.5	120	8.1 X 8	100	10	70	12.5(1/2")
300, 500, 1K	30	90	2.5	150	8.1 X 8	125	15	100	25.4(1")
2K, 3K, 5K	40	110	2.5	190	16.5 X 8	152	20	150	38(1 1/2")
10K	70	110	2.5	190	19.5 X 8	152	25	200	63.5(2 1/2")
20K, 30K, 50K	100	150	2.5	240	19.5 X 8	203	25	300	89(3 1/2")

Specifications are subject to change.

All dimensions are in mm.



Manufactured in INDIA by:
ADI ARTECH
TRANSDUCERS PVT. LTD.

917/1, G.I.D.C. Estate, Makarpura, Vadodara - 390 010, Gujarat, INDIA
Mobile : +91-9374068998, 9879444551, 9054467370
Email : sales@adiartech.com, adiartech@adiartech.com
Website : www.adiartech.com