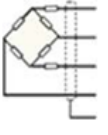
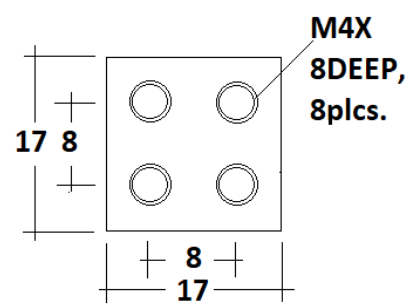


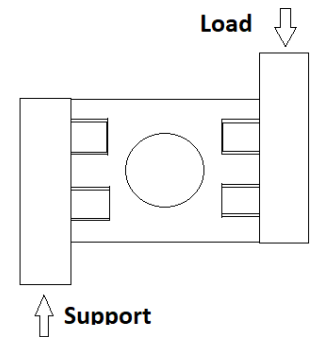
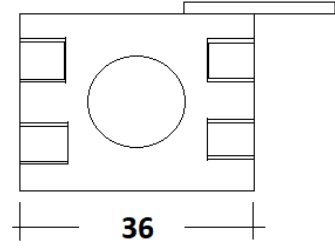
**Description**

60920 is low profile side mounted bending or shear beam load cell for Web Tension Measurement. It is constructed with Aluminum Alloy. It is strain gage based with full temperature compensation over 10 to 50°C. Its side mounted loading design helps to build web tension measuring sensor by OEMs.

<b>Features</b>	
<ul style="list-style-type: none"> <li>❖ 20 Kgf. to 50Kgf. capacities are offered.</li> <li>❖ Complete environmental protection for gage area is provided for IP-65 protection class.</li> <li>❖ Other capacities can be customized as per requirements.</li> <li>❖ Designed for Web Tension Measuring Sensor OEMs.</li> </ul>	
<b>Applications</b>	
<ul style="list-style-type: none"> <li>❖ Web Tension Sensor</li> <li>❖ Force gage</li> <li>❖ Check weigher</li> <li>❖ Small bagging machines</li> </ul>	
<b>Performance Specification</b>	
Standard Capacities	20, 50 Kgf.
Excitation Voltage	10 VDC- Maximum 15 VDC
Nominal Output	2.0 m V/ V
Non - Linearity	< ±0.05% FSO (Full Scale Output)
Hysteresis	< ±0.05% FSO
Non-Repeatability	< ±0.05% FSO
Creep (30 minutes)	< ±0.03% FSO
Zero Balance	±2.0% FSO
Input Resistance	350 ± 5 Ohms
Output Resistance	350 ± 5 Ohms
Insulation Resistance (50 VDC)	> 1000 Mega Ohms
Cable Length (4 Core Screened)	300mm.
Safe Overload of Rated Capacity	150%
Ultimate Overload of Rated Capacity	250%
Allowable Side Load	50%
Temp. Compensated Range	10-50 °C
Temperature Effect on Output	< 0.025% FSO/ °C
Temperature Effect on Zero	< 0.030% FSO/ °C
Platter Size	NA
Deflection	< 0.4 mm at FSO
Finish & Construction	Aluminum Alloy
Environmental Protection Class	Meets IP 65
<b>Electrical Termination</b>	<b>Options</b>
 <ul style="list-style-type: none"> <li>+ Input - Red</li> <li>+ Output - Green</li> <li>- Input -Black</li> <li>- Output - White</li> <li>Shield - Floated</li> </ul>	<ul style="list-style-type: none"> <li>* Compatible Instruments with Relay output, 4-20 mA or 0-2 Volt Output</li> <li>* Digital Version with RS-485 interface / USB output / Blue Tooth Telemetry / Wireless Telemetry</li> <li>* Software for Graphic, Tabulation and Reporting</li> <li>* Customization with customers dimensions</li> </ul>



**4 core cable,300mm**



Specifications are subject to change.

All Dimensions are in mm.

	Manufactured by: <b>ADI ARTECH</b> <b>TRANSDUCERS PVT. LTD.</b>	917/1, G.I.D.C. Estate, Makarpura, Vadodara - 390 010, Gujarat, INDIA <b>Phone</b> : +91-265-2655083, 2651023,2638751 <b>Mobile</b> : +91-9374068998, 9879444551, 9054467370 <b>Email</b> : sales@adiartech.com, adiartech@adiartech.com <b>Website</b> : www.adiartech.com
-------------------------------------------------------------------------------------	-----------------------------------------------------------------------	-----------------------------------------------------------------------------------------------------------------------------------------------------------------------------------------------------------------------------------------------------------------------------------------