

**Description**

ADI ARTECH'S Torque transducer TTD-FF is **CE Certified** flanged type general purpose dynamic rotary type sensor for accurate measurement of Torque in rotating equipment. It is constructed from SS17-4 PH / Tool Steel material. This is strain gage based sensor with full temperature compensation over 10~50°C. It is very accurate, reliable and sturdy for industrial applications. It is compensated for axial and bending forces for precise torque measurements. It is available from 0-5NM to 0-50KNM ranges. TTD-FF is Wireless Telemetry torque sensor. This wireless transmitting device is supported with remote indicator duly calibrated. Transmitter with signal conditioner is supported with battery power within the sensor.

This can be offered with customer's required specification. This system also can be provided optionally with user's software for graphics, tabulation and analysis.

**Features**

- ❖ **CE Compliance – EMC-2014/30/EU** ❖ Standard Ranges-0-5NM to 0-50KNM.
- ❖ SS17-4 PH / Tool Steel construction for resistance against shock and overload.
- ❖ Can be designed to fit your dimensional needs.
- ❖ Other capacities are available on request up to 50KNM. Max.

**Applications**

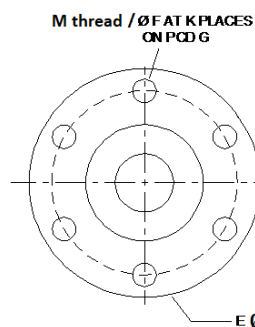
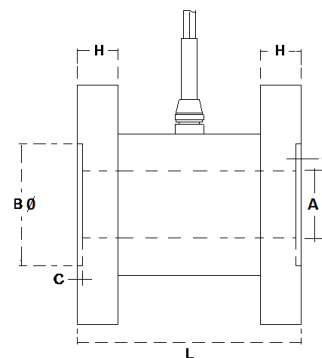
Electrical tool testing	Gear Box Testing
Axle/shaft torsion test	Bearing friction measuring
Testing of starters/slip rings/brushes/clutches/brakes	Electric/hydraulic/pneumatic motors testing
Alternators/pumps/gas & diesel turbine engines testing	Engine Dynamometer, Automobile Testing

**Performance Specification**

Standard Capacities in NM	See Table below
RPM	4000 max - Non – Contact type with Radio Telemetry system
Non – Linearity	< ±0.2% FSO
Hysteresis	< ±0.2% FSO
Non-Repeatability	< ±0.5% FSO
Creep (30 minutes)	< ±0.3% FSO
RF Transmitter	Battery operated with inbuilt battery & installed on the Torque Shaft, Transmitters sensor signal via Radio Telemetry to stationary Receiver
Rechargeable Battery	Li-Ion battery pack capable of 20 Hrs. run time installed in Transmitter with one spare battery & battery charger.
Zero Drift	± 0.02% / °C
Span Drift	± 0.02% / °C
Operating Temperature	10 to 50 °C
Safe Overload	150% OF RC
Ultimate Overload	200% OF RC
Temp. Compensated Range	10 to 50 °C
Display & Receiver	LED with 5 Digits. Receives Radio Signal from Transmitter.
Display & Receiver Power	230VAC @ 50 HZ
Finish & Construction of TTD	Tool Steel or Stainless Steel 17 – 4 PH

**Options**

- Compatible Instrument with 4-20 mA / 0-2 Volt Output
- Digital Version with RS-485 interface / USB output
- Blue Tooth Or Wireless Telemetry
- Software for Graphic, Tabulation, Reporting and Analysis



Capacity-NM	A ø	B ø	C	E ø	M threads/ øF Thru Holes	K plc.	G-PCD	H	L
5*,10*,20*	5	40	2.5	78	6 / NA	6	64	10	100
50,100,200,300,500, 1K	10	70	2.5	120	10 / 10.2	8	100	12	110
1.5k 2K, 3K, 5K	60	90	2.5	150	12 / 12.7	8	125	20	110
10K	60	110	5.0	190	16 / 16.5	8	152	22	110
20K, 30K	60	150	5.0	240	19 / 19.5	8	203	25	120
50K	60	175	5.0	285	24 / 24.5	8	247	30	130

Specification are subject to change.

\* Aluminum Construction

All dimensions are in mm.



Made in INDIA by:  
**ADI ARTECH**  
**TRANSDUCERS PVT. LTD.**  
 (An ISO 9001:2015 Certified Company)

917/1, G.I.D.C. Estate, Makarpura, Vadodara - 390 010, Gujarat, INDIA  
**Mobile** : +91-9374068998, 9879444551, 9054467370  
**Email** : sales@adiartech.com, adiartech@adiartech.com  
**Website** : www.adiartech.com