

**Description**

Ultra Precision Strain Gage based 20710 Crane Load Cell is **CE Certified**, versatile, compact and rugged. It is used for tension measurements, Crane weighing. It is used in tension mode only.

Tension Loading can be done with Dee / Bow Shackle & Threaded Hook. It is available in 10Tf to 60 Tf capacities.

**Features**

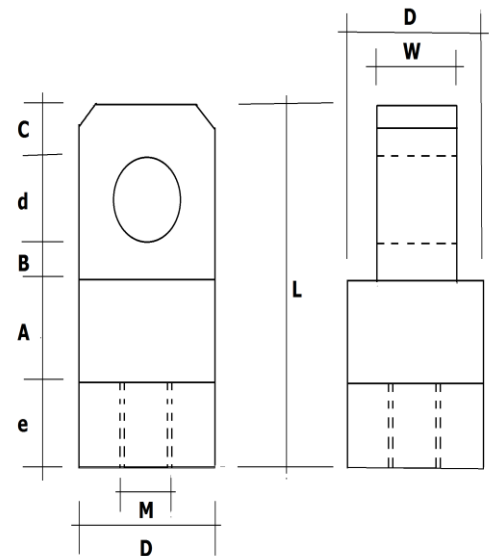
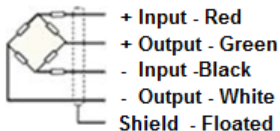
- ❖ **CE Rated** ❖ 10, 20, 45, 60 TF Capacities available.
- ❖ High Alloy Tool Steel construction for resistance against shock and overload.
- ❖ It can be used with swiveling hook at load end.
- ❖ It is light weight and portable.
- ❖ High Temperature version for foundry applications is available upon request.
- ❖ Can be designed to fit your dimensional needs.

**Applications**

- ❖ To measure rope tension by inserting as a link in to the line.
- ❖ To measure towing force of the vehicles and Ships.
- ❖ Force Measurement Tension Dynamometer.
- ❖ Hanging & Crane Scale.
- ❖ Material handling equipments.
- ❖ Cargo handling in Ship Yards.

**Performance Specification**

Standard Capacities	10, 20, 45, 60 TF.
Excitation Voltage	10 VDC- Maximum 15 VDC
Nominal Output	1.0 m V/ V
Non - Linearity	< ±0.15% FSO
Hysteresis	< ±0.03% FSO
Non-Repeatability	< ±0.02% FSO
Creep (30 minutes)	< ±0.04% FSO
Zero Balance	±1.0% FSO
Input Resistance	780 ± 15 Ohms
Output Resistance	700 ± 3 Ohms
Insulation Resistance (50 VDC)	> 1000 Mega Ohms
Cable Length (4 Core Screened)	5 Mtrs.
Safe Overload of Rated Capacity	150%
Ultimate Overload of Rated Capacity	200%
Allowable Side Load	50%
Temp. Compensated Range	0-60 °C
Temperature Effect on Output	< 0.0015% FSO/ °C
Temperature Effect on Zero	< 0.0020% FSO/ °C
Deflection	< 0.4 mm at FSO
Finish & Construction	Electroless Nickel Plated Tool Steel
Environmental Protection Class	Meets to IP65 class of protection

**Electrical Termination****Options**

- \* Supportive Hardware such as :  
Shackle and Threaded Hook
- \* Compatible Instruments with Relay output, 4-20 mA or 0-2 Volt Output
- \* Digital Version with RS-485 interface / USB output / Blue Tooth Telemetry / Wireless Telemetry
- \* Software for Graphic, Tabulation and Reporting

CAPACITY TF	A	B	C	d	D	L	M	W	e
10	60	30	25	42	78	197	30 X 2	58	40
20	65	30	30	42	88	217	42 X 2	58	50
45	70	40	40	58	115	298	64 X 4	80	90
60	90	45	45	72	148	352	76 X 4	102	100

Specifications are subject to change. All dimensions are in mm.



Made in INDIA by:

**ADI ARTECH**  
TRANSDUCCERS PVT. LTD.

(An ISO 9001:2015 Certified Company)

917/1, G.I.D.C. Estate, Makarpura, Vadodara - 390 010, Gujarat, INDIA

**Mobile** : +91-9374068998, 9879444551, 9054467370

**Email** : sales@adiartech.com, adiartech@adiartech.com

**Website** : www.adiartech.com