

Description

ADI ARTECH'S Torque cum Thrust transducer DAS-200 is **CE Certified** general purpose Torque cum Thrust sensor for accurate measurement of Torque and Thrust on shaft or equipment. It is constructed from SS 17-4 ph / Tool Steel material. This is strain gage based sensor with full temperature compensation over 10 to 50 °C. It is very accurate, reliable and sturdy for industrial applications. It is compensated for Bending forces for accurate torque & thrust measurements. It is available from 0 to 50NM/25KN to 0 to 50KNM/3000KN ranges. DAS is available in wide variety of options: both ends shaft, both end flange and combination of shaft & flange. Customized version can be provided as per user's dimensions and capacity.

Features

- ❖ **CE Rated** ❖ Wide ranges are offered as per table given below.
- ❖ Material of construction is Stainless Steel 17-4PH/Tool Steel for resistance against shock and overload.
- ❖ Can be designed to fit your dimensional needs.

Applications

- ❖ Electrical tool testing
- ❖ Axle/shaft torsion test
- ❖ Testing of starters / slip Rings / brushes / clutches / brakes
- ❖ Alternators / pumps / gas & diesel turbine engines testing
- ❖ Gear Box Testing
- ❖ Bearing friction measuring
- ❖ Electric / hydraulic / pneumatic motors testing
- ❖ Engine Dynamometer, Automobile Testing

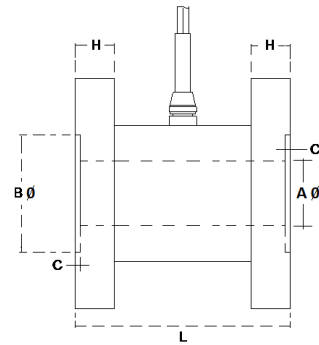
Performance Specification

Standard Capacity	Torque Compressive Thrust	See Table below
Excitation Voltage		10 VDC- Maximum 15 VDC
Nominal Output		2.0 m V/ V +/- 0.5
Non - Linearity		< ±0.2% FSO - Torque < ±0.5% FSO - Thrust
Hysteresis		< ±0.2% FSO(full scale output)
Non-Repeatability		< ±0.2% FSO
Creep (30 minutes)		< ±0.1% FSO
Zero Balance		±1.0% FSO
Input Resistance		390 Ohms
Output Resistance		350 Ohms
Insulation Resistance (50 VDC)		> 1000 Mega Ohms
Insulation Resistance (50 VDC)		> 1000 Mega Ohms
Temp. Compensated Range		0-60 °C
Temperature Effect on Output		< 0.05% FSO/ °C
Temperature Effect on Zero		< 0.05% FSO/ °C
Finish & Construction		Tool steel
Environmental Protection Class		IP65 Gage Area

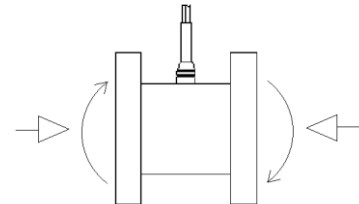
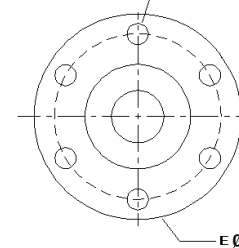
Electrical Termination:

Wire Color Code

Red	Ex. +
Black	Ex. _
Green	Signal Torque +
Whit1e	Signal Torque _
Yellow	Signal Thrust +
Blue	Signal Thrust _



M thread / Ø FAT K PLACES ON PCD G



Capacity-NM /KN	A-dia.	B	C	E-dia.	F X K PLCS.	G - PCD	H	L
50NM/25KN 100NM/40KN	10	40	2.5	78	8.1 X 6	64	10	70
200NM/60KN, 300NM/85KN 500NM/120KN	15	50	2.5	100	8.1 X 8	80	12	90
1KNM/150KN	30	70	2.5	120	10.2 X 8	100	15	100
1.5KNM/130KN, 2KNM/175KN, 3KNM/250KN, 5KNM/400KN	60	90	2.5	150	12.7 X 8	125	20	110
10KNM/775KN	60	110	5.0	190	16.5 X 8	152	22	110
20KNM/1400KN, 30KNM/2000KN	60	150	5.0	240	19.5 X 8	203	25	120
50KNM/3000KN	60	175	5.0	285	24.5 X 8	247	30	130

Specifications are subject to change.

All dimensions are in mm.

	Manufactured by:	917/1, G.I.D.C. Estate, Makarpura, Vadodara - 390 010, Gujarat, INDIA
	ADI ARTECH TRANSDUCERS PVT. LTD. <small>(An ISO 9001:2015 Certified Company)</small>	Mobile : +91-9374068998, 9879444551 Email : sales@adiartech.com, adiartech@adiartech.com Website : www.adiartech.com