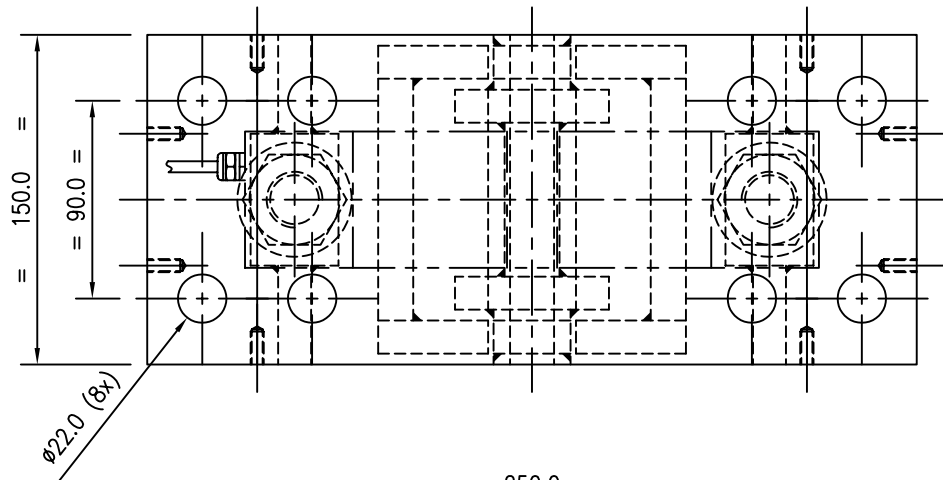


NOTES -

- 1) PAD PLATE (NOT PART OF THIS MTG. KIT - REF. DRG. NO. M12/0019/0) TO BE WELDED TO A STEEL FOUNDATION AT SITE.
- 2) TOP PLATE (#11) TO BE BOLTED TO THE LUG/LEG/FLANGE/ETC. OF WEIGHED STRUCTURE.
- 3) USE TEMPORARY SUPPORT (REF. DRG. NO. M12/0020/0) FOR ERECTION PURPOSE TO AVOID DAMAGE TO LOAD CELL AND MOUNTING KIT. AFTER ERECTION, REPLACE EACH TEMPORARY SUPPORT ONE BY ONE WITH LOAD CELL AND MOUNTING KIT ASSEMBLY.

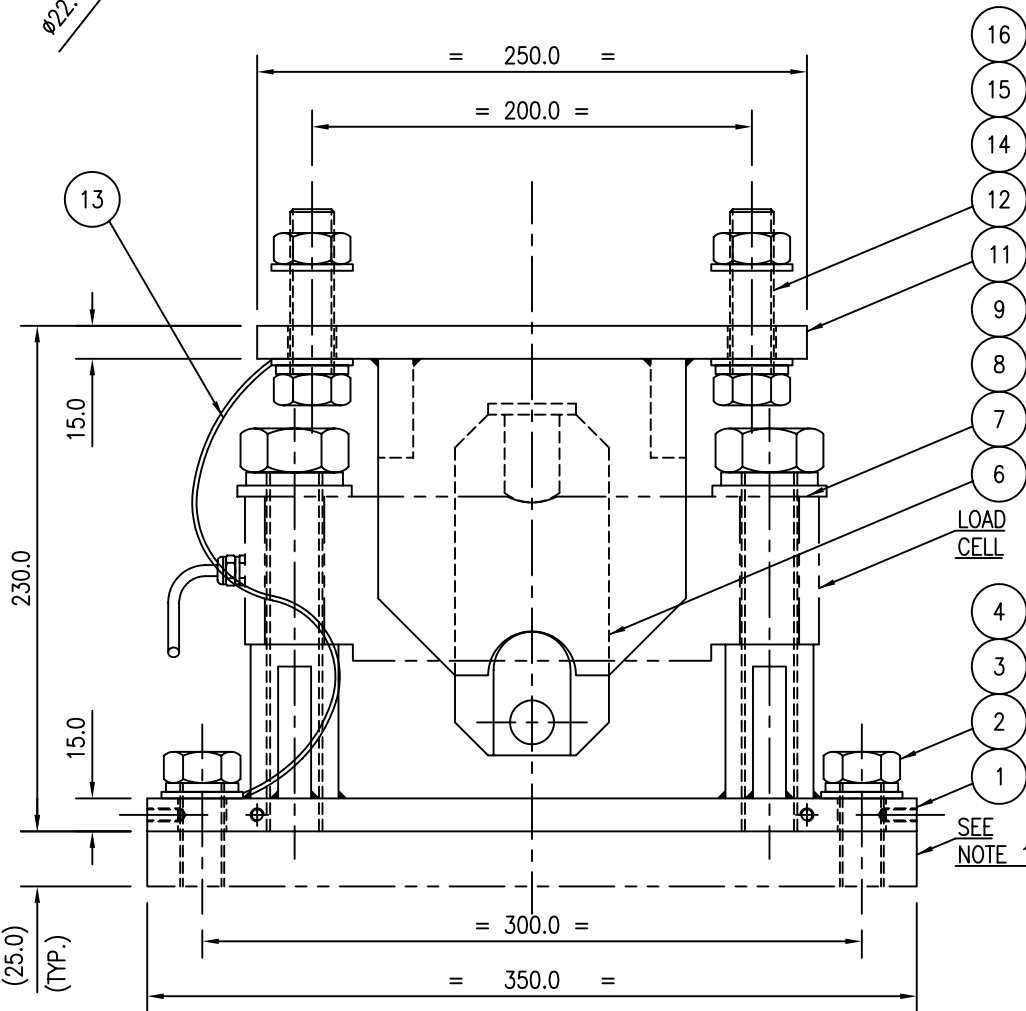
16	HEX NUT	M16x2.0	MS/Zn		4
15	PL WASHER	FOR M16	MS/Zn		8
14	SPR WASHER	FOR M16	MS/Zn		4
13	EARTH STRAP	∅5.0x300.0, d18.0	Cu/Ni	M41/0005/0	1
12	HEX BOLT	M16x2.0x75.0	MS/Zn		4
11	TOP PLATE	200.0x125.0x12.0	MS/Zn	M12/0018/0	1
10	<i>INTENTIONALLY LEFT BLANK</i>				
9	PL WASHER	FOR M16	MS/Zn		2
8	SPR WASHER	FOR M16	MS/Zn		2
7	HEX BOLT	M16x2.0x100.0	MS/Zn		2
6	SHACKLE	50.0x130.0x125.0	MS/Zn	M12/0017/0	1
5	<i>INTENTIONALLY LEFT BLANK</i>				
4	PL WASHER	FOR M16	MS/Zn		4
3	SPR WASHER	FOR M16	MS/Zn		4
2	HEX BOLT	M16x2.0x40.0	MS/Zn		4
1	BOTTOM PLATE	300.0x125.0x12.0	MS/Zn	M12/0016/0	1

SR.NO.	DESCRIPTION	SIZE / SPECIFICATION	MATERIAL	REF. CODE NO.	QTY.
CLIENT : .			FILE : MK05816N.DWG		
PROJECT : .			APPROVED		REV.5
TOLERANCES - LINEAR: ±0.5 HOLES: H13			CHECKED		REV.4
CH.: 0.5x45° U/C: 1.0x1.0 S.F.: ~			DRAWN	NRE 01.04.09	REV.3
MATERIAL : Mild Steel			REV.2		
UNITS mm			REV.1		
SCALE 1:2.5			MOUNTING KIT FOR 70310 L/C 5 - 10 t		
TREATMENT/FINISH : Zinc Plated and Yellow Passivated					
DOC DWG			MK/058/16N		
ADI ARTECH TRANSDUCERS PVT. LTD.: 917/1, GIDC, Makarpura, Vadodara, 390010, INDIA					SHEET NO. 1 OF 1 A3



NOTES -

- 1) PAD PLATE (NOT PART OF THIS MTG. KIT - REF. DRG. NO. M12/0024/0) TO BE WELDED TO A STEEL FOUNDATION AT SITE.
- 2) TOP PLATE <#11> TO BE BOLTED TO THE LUG/LEG/FLANGE/ETC. OF WEIGHED STRUCTURE.
- 3) USE TEMPORARY SUPPORT (REF. DRG. NO. M12/0025/0) FOR ERECTION PURPOSE TO AVOID DAMAGE TO LOAD CELL AND MOUNTING KIT. AFTER ERECTION, REPLACE EACH TEMPORARY SUPPORT ONE BY ONE WITH LOAD CELL AND MOUNTING KIT ASSEMBLY.



16	HEX NUT	M20x2.5	MS/Zn		4
15	PL WASHER	FOR M20	MS/Zn		8
14	SPR WASHER	FOR M20	MS/Zn		4
13	EARTH STRAP	∅5.0x300.0, d22	Cu/Ni	M41/0006/0	1
12	HEX BOLT	M20x2.5x75.0	MS/Zn		4
11	TOP PLATE	250.0x150.0x15.0	MS/Zn	M12/0023/0	1
10	<i>INTENTIONALLY LEFT BLANK</i>				
9	PL WASHER	FOR M24	MS/Zn		2
8	SPR WASHER	FOR M24	MS/Zn		2
7	HEX BOLT (FULL THREADED)	M24x3x125.0	MS/Zn		2
6	SHACKLE	70.0x160.0x150.0	MS/Zn	M12/0027/0	1
5	<i>INTENTIONALLY LEFT BLANK</i>				
4	PL WASHER	FOR M20	MS/Zn		4
3	SPR WASHER	FOR M20	MS/Zn		4
2	HEX BOLT	M20x2.5x45.0	MS/Zn		4
1	BOTTOM PLATE	350.0x150.0x15.0	MS/Zn	M12/0026/0	1
SR.NO.	DESCRIPTION	SIZE / SPECIFICATION	MATERIAL	REF. CODE NO.	QTY.

CLIENT : .	APPROVED			FILE : MK05836N.DWG
PROJECT : .	CHECKED			REV.5
TOLERANCES - LINEAR: ±0.5 HOLES: H13	DRAWN			REV.4
CH.: 0.5x45° U/C: 1.0x1.0 S.F.: ~	NRE			01.04.09
MATERIAL : Mild Steel	UNITS mm			REV.3
	SCALE 1:2.5			REV.2
TREATMENT/FINISH : Zinc Plated and White Passivated	Wt. kg			REV.1
	DOC DWG			
MOUNTING KIT FOR 70310 L/C				
15 - 30 t				
ADI ARTECH TRANSDUCERS PVT. LTD.: 917/1, GIDC, Makarpura, Vadodara, 390010, INDIA				MK/058/36N
SHEET NO. 1 OF 1				A3